

مركز الملك سلمان للإغاثة والأعمال الإنسانية  
KING SALMAN HUMANITARIAN AID & RELIEF CENTRE



**Dr. Hana Omar**  
Advisor to the Supervisor General & Director of  
Partnerships and International Relations



# The Contemporary Challenges of Multilateralism In Humanitarian Work



## About the Center

**Under the Custodian of the Two Holy Mosques, King Salman Humanitarian Aid and Relief Center was established on May 15**

### Mission

Manage and coordinate relief activities on the international level to ensure the provision of external aid in line with national interests.

### Vision

To become a leading center for relief and humanitarian activities and to transfer our values to the world..



# Foundations of Humanitarian Work

## International Humanitarian Law (IHL):

- ❖ Protect civilians and aid workers
- ❖ Protect hospitals and relief convoys

## Humanitarian Principles:

- ❖ Humanity, Neutrality, Independence, Impartiality





# Humanitarian Challenges

- ❖ Armed conflict
- ❖ Violations against humanitarian workers
- ❖ Funding gaps
- ❖ Humanitarian access



# Access Challenges & Violations

- ❖ Blockades and restrictions preventing humanitarian entry
- ❖ Movement restrictions, including limitations on women (e.g., requirement of a male guardian in some areas)
- ❖ Creating a parallel system to the existing ones

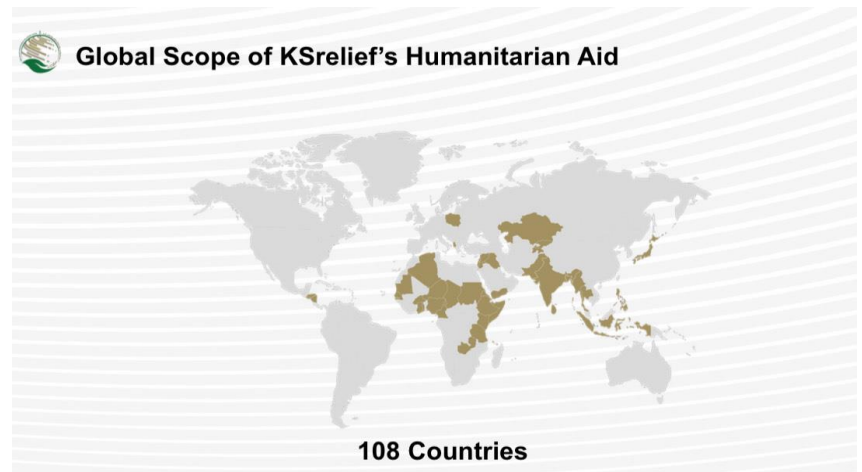
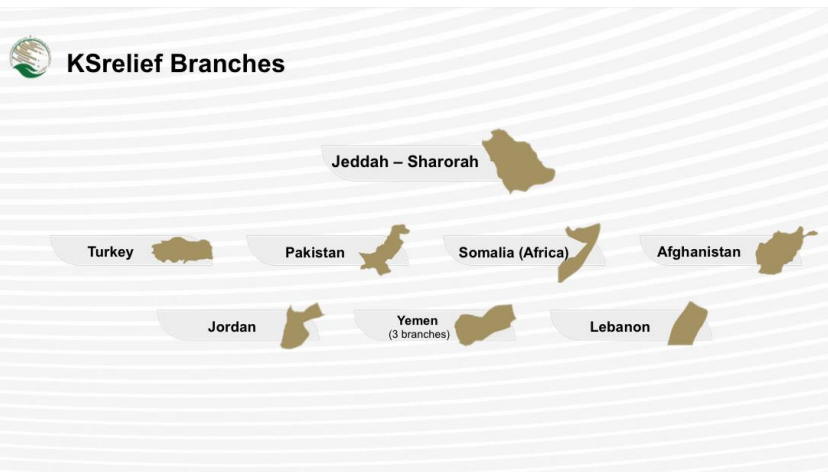
## Violations:

- ❖ Raids on humanitarian offices, confiscation of equipment, and detention of staff
- ❖ Targeting of hospitals and medical convoys



# KSrelief in Numbers

- ❖ Over 3,746 projects
- ❖ Value: 8 Billion USD
- ❖ Beneficiary Countries: 108
- ❖ Branches (10) : Saudi Arabia (2 branches), Turkey, Pakistan, Somalia, Afghanistan, Jordan, Yemen(3 branches), Lebanon



# Humanitarian and Relief Sectors



**Humanitarian and  
Emergency Relief  
Coordination**



**Early Recovery**



**Volunteering**



**Nutrition**



**Health**



**Education**



**Logistics**



**Emergency  
Telecommunication**



**Water, Sanitation  
and Hygiene (WASH)**



**Shelter**



**Protection**

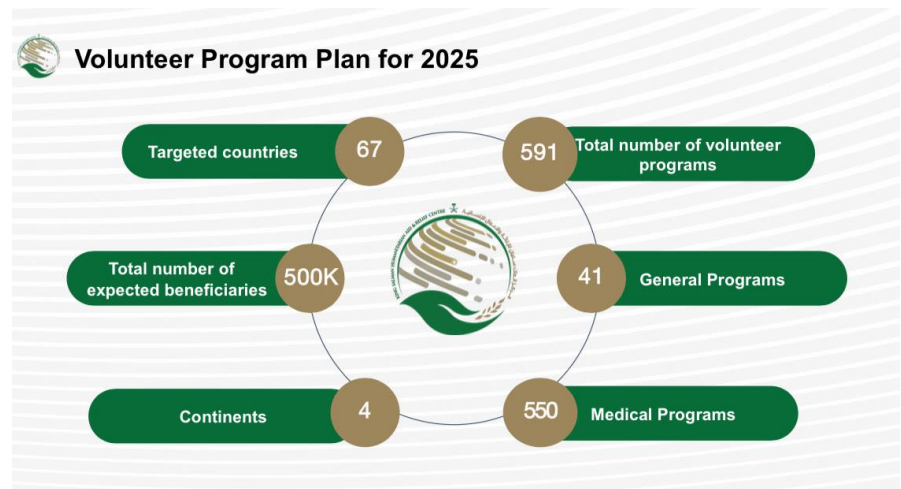


**Food Security**

# Global Humanitarian Leadership

## KSrelief works with partners in global humanitarian action through:

- ❖ HDP Nexus: combining relief, development, and peacebuilding
- ❖ Building strategic partnerships
- ❖ Promoting coexistence, resilience, and peace
- ❖ Localization
- ❖ Volunteering





# KSrelief's Unique Projects

## KSrelief delivers humanitarian aid through:

- ❖ Air, sea and land relief bridges
- ❖ MASAM ,Mine clearance projects
- ❖ CFAAC Project ,reintegration of children formerly associated with armed conflict.
- ❖ Prosthetic centers and rehabilitation services
- ❖ Sama'a Program







# Conjoined Twins Programme

## Conjoined Twins

Saudi Conjoined Twins Programme (1990-2025)



## Major International Partnerships with KSrelief

- ❖ IsDB – Lives and Livelihoods Fund (LLF) – co-financing sustainable development projects in low-income countries.
- ❖ Global Polio Eradication Initiative (GPEI)- in partnership with WHO and UNICEF to protect millions of children across the world.
- ❖ Central Emergency Response Fund (CERF) –supporting rapid response to global emergencies
- ❖ OCHA Donor Support Group (ODSG) –enhancing coordination and effectiveness of humanitarian funding
- ❖ Yemen Humanitarian Fund (YHF) – supporting coordinated humanitarian response and recovery efforts in Yemen.

# Ukraine Support

## KSrelief has extended humanitarian support to Ukraine by funding:

- ❖ Food Security and Agriculture
- ❖ Medical supplies and emergency health interventions
- ❖ Protection and psychosocial programs for IDPs
- ❖ Shelter and Non-Food Items
- ❖ Health
- ❖ Volunteer medical programs

Total Projects: 26

Total Aid disbursed : 83 M USD

- ❖ Over 125 ambulances
- ❖ 149 Electric Generators
- ❖ 21 Airlifts carrying medical and relief equipment





# Gaza Crisis

## **UN report (Aug 2025):**

Over 62000 killed, over 157000 injured, mostly civilians (women & children)  
833,000 displaced, 12,000+ children acutely malnourished  
98% of agricultural land damaged

Saudi Arabia's total support for Palestine exceeds 5.45B USD.

## **KSrelief's response since Oct 2023:**

19 projects worth 156M USD

Relief vessels, planes, and airdrops delivering food, shelter, medical aid, logistics, WASH, and protection

Popular campaign launched via 'Sahim' platform on 2 Nov 2023

**Humanitarian Diplomacy:** High-level International Conference for the Peaceful Settlement of the Question of Palestine and the Implementation of the Two-State Solution July 2025

**Key Demands:** Immediate ceasefire, open crossings, protect civilians and humanitarian workers, restore trade and services.

# Sudan Crisis

## **Situation (2025):**

61,000 killed in Khartoum alone during first 14 months  
12M displaced, 3.8M fled to neighboring countries  
30M in need of aid  
84 humanitarian workers killed

Challenges: obstruction of aid delivery, looting of humanitarian supplies, natural disasters (floods, landslides).

**Saudi total support:** 3.14B USD | KSrelief: 214 projects worth 167.9M USD

## **Delivered through:**

54 relief ships and 13 airlifts  
Sectors: health, WASH, food security, shelter, operations support, volunteer programs

**Humanitarian Diplomacy:** Jeddah Declaration for the Protection of Civilians in Sudan

**Key Demands:** uphold IHL, ceasefire, protection of civilians, scale up humanitarian support.

# Syria Crisis

## **Situation:**

6.8M IDPs, 16M people in need of humanitarian aid  
Infrastructure heavily damaged (hospitals, schools)

**Challenges:** security restrictions, major funding gap, weak infrastructure.

**Saudi total support:** 7.56B USD | KSrelief: 422 projects worth 532.9M USD

Left sanctions

## **Achievements:**

Aid: 13,515 tons via 18 air shipments & 808 trucks

Distributions: rice, flour, food baskets, winter clothes, medical supplies, shelter kits.

**'Amal' Volunteer Program:** 55 projects worth 47 M USD, surgeries prosthetics, economic empowerment, psychosocial support

**'Aman' Project for Syrian Orphans:** 750 beneficiaries worth 1 M USD  
psychological and social support, economic empowerment

**Humanitarian Diplomacy:** Lifting Sanctions on Syria

# Ksrelief and SDGs

## Humanitarian action contributes directly to advancing the UN Sustainable Development Goals (SDGs), particularly in:

- ❖ Reduces poverty and vulnerability
- ❖ Addresses hunger and improves nutrition
- ❖ Delivers essential health and emergency care
- ❖ Supports education in crisis settings
- ❖ Provides clean water and sanitation
- ❖ Promotes sustainable and clean energy access
- ❖ Strengthens peace, justice, and resilience
- ❖ Builds partnerships to maximize humanitarian impact



# Activities for Empowering Women

- ❖ Psychosocial and legal support to survivors of violence
- ❖ Reference guides on women's protection
- ❖ Community cohesion and awareness programs
- ❖ Awareness-raising to combat all forms of violence
- ❖ Community centers and survivor-friendly spaces

**Saudi total support:** 1144 Projects worth more than 89 M USD





# Success Story: Yemen Renewable Energy Project

- ❖ 375 Yemeni women trained in renewable energy
- ❖ Women-led microbusinesses in solar products
- ❖ 21,000+ beneficiaries
- ❖ Promotes innovation & sustainability in Yemen
- ❖ Locations: Lahj & Hadramout
- ❖ Budget: 2.5M USD (2024–2025)



# KSrelief as a Model for Peaceful Coexistence

- ❖ Embodies the Humanitarian-Development-Peace (HDP) Nexus
- ❖ Provides immediate relief while fostering long-term stability
- ❖ Builds partnerships
- ❖ Humanitarian Diplomacy
- ❖ Promotes coexistence, resilience, and peacebuilding



# International Partners



## Our Partners

332 partners (national, international and UN agencies), including:





Thank You





# KING SALMAN HUMANITARIAN AID & RELIEF CENTRE


 [KSRELIEF.ORG](https://www.ksrelief.org)

 [KSRelief](https://twitter.com/KSRelief)

 [ksrelief](https://www.instagram.com/ksrelief)

 [ksrelief.org](https://www.facebook.com/ksrelief.org)

 [info@ksrelief.org](mailto:info@ksrelief.org)

 [+966 920008554](https://wa.me/966920008554)